

Fig. 1a. Photopeak only, no corrections, 1.5 mCi (55 MBq), singles rate 1.4 Mcps, coinc rate 11 kcps, total 333 Mcts

Fig. 1b. As in Fig. 1a but with randoms correction (model-based)

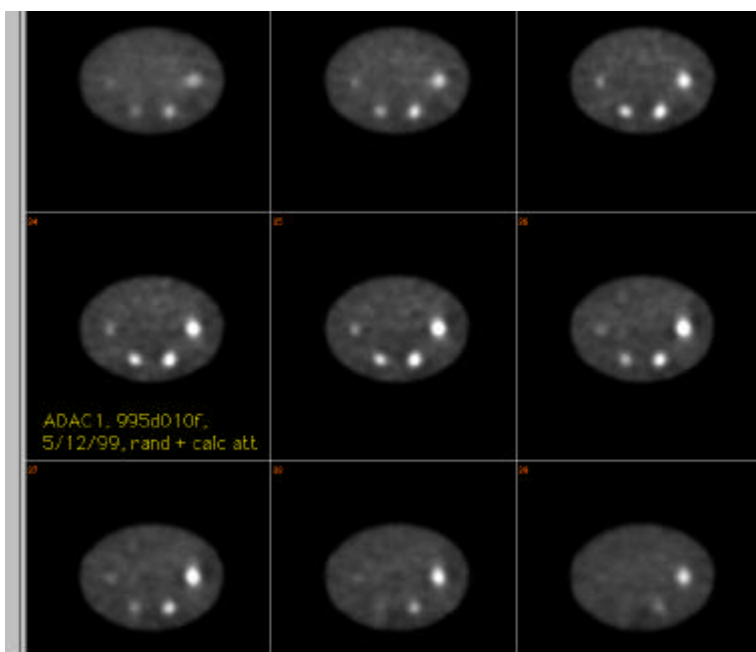


Fig. 1c. As in Fig 1a but w/randoms correction and w/calculated attenuation correction.

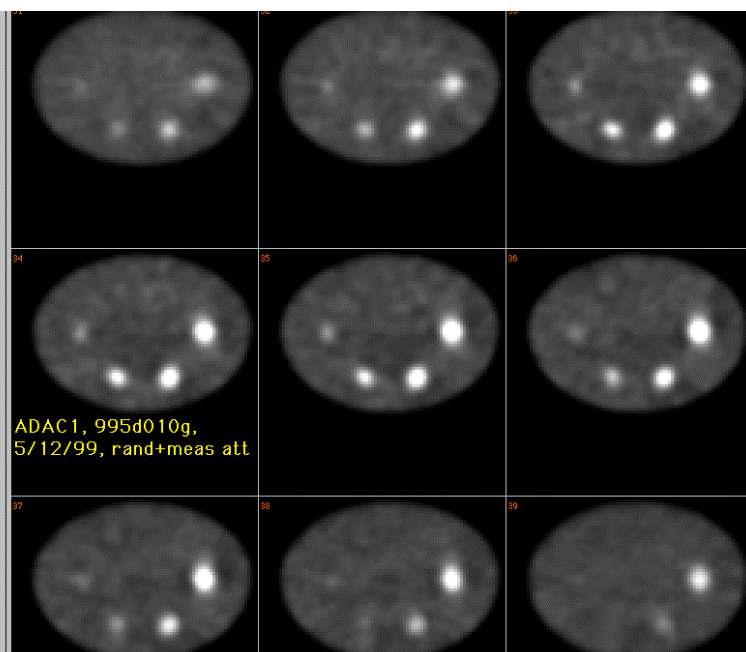


Fig. 1d. As in Fig. 1a but w/randoms correction and w/measured attenuation correction.

Fig. 1. Comparing the effects of model-based randoms correction and calculated vs. measured attenuation correction with the ADAC MCD. Spheres 5 and 6 are not seen but the four largest spheres are seen with good contrast and high DI.